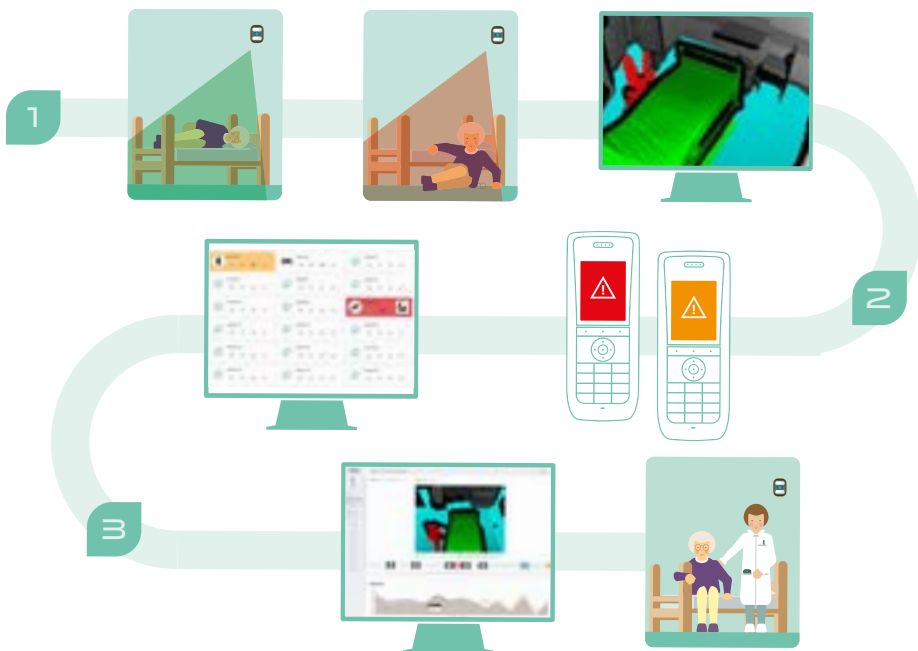




INFORMATION BOOKLET ABOUT PERSONAL DATA

A complete information sheet is available from the institution's staff.

HOW DOES ISA WORK?



ISA recognises your movements and informs a nurse if you have a fall.

HOW CAN ISA HELP ME?



It enables you to grow in confidence as you move about.



It monitors your sleep.



Carers will provide assistance if you are having a bad night...

...and they will quickly come to your aid if you have a fall.



To be able to provide you with care, we need some information (or data) about you and we also need reliable people to process that data.



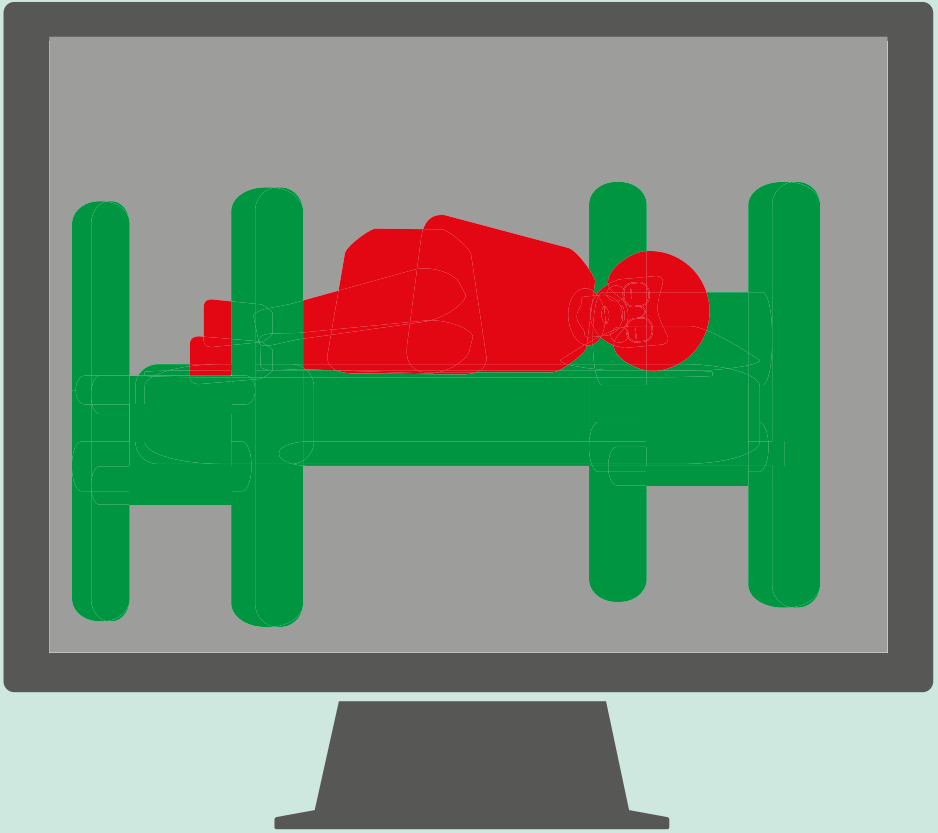
Who are these reliable people? The hospital and MintT.

MintT and the hospital are responsible for processing your personal data.



We keep the data we collect for six months after you leave.

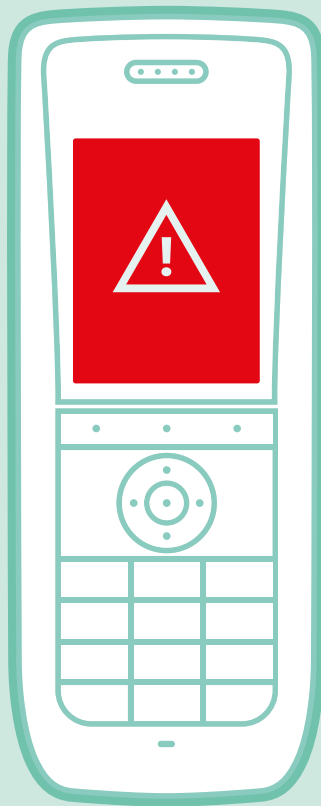
**WHAT TYPE OF DATA
IS COLLECTED?**



We gather images.



We keep track of your movements.



We receive alerts when you fall.

WHAT ARE MY RIGHTS?



This personal data is your treasure. It contains part of your life at the hospital. It only belongs to you and you can do what you want with it.



In order to be able to care for you, we need to be given access to your treasure. We have close ties with you – and also some obligations. Together, we do everything we can to take special care of this treasure.



In a clinical study, you may WITHDRAW YOUR CONSENT. «I want my treasure back!»

Otherwise, the hospital has the right to use your data for its activities.



You can switch OFF the detector.



You can access your data, correct it or remove it.

“I want to be able to count my coins, clean them and throw away the ones that are too heavy.”



You can make a complaint, if you feel that your treasure was not taken care of at a particular moment.

Contact a member of staff directly who will forward your request to MintT.

Send a written and signed request with a copy of your identity document.

**MintT SA
Avenue Louise, 251
1000 Brussels
privacy@mintt.care**

A complaint may also be submitted to a supervisory authority directly.

**Autorité de protection des données
Rue de la Presse 35, 1000
Bruxelles
Tél. + 32 2 274 48 00
Fax. + 32 2 274 48 35
contact@apd-gba.be**